

Building Partnerships

Geomodeling has partnered with dynamic companies around the globe to assist geoscientists with choosing and integrating Geomodeling software products and supporting services.

In June, Geomodeling and Roxar, a leading international technology solutions provider to the upstream oil and gas industry, announced a multi-year agreement to resell Geomodeling's seismic interpretation software, VisualVoxAt™. The announcement was made at the 69th EAGE Conference & Exhibition, that took place in London from June 11 to 14.

The global agreement was attractive to Roxar because adding VisualVoxAt to their portfolio will provide them with a full seismic- through-modeling capability for their customers, allowing access to visualization and interpretation solutions. For Geomodeling, this agreement opens up the borders to provide access into new markets.

Geomodeling also has a relationship with Net Brains of Mexico. Net Brains' primary business is information technology and geoscience consulting for companies, to assist them in selecting state-of-the-art technology and integrating it into their business.

Geomodeling is also working through Interactive Earth Sciences in Denver. Interactive Earth Sciences is a geoscience consultancy providing a full range of workstation-based geotechnical services to the oil and gas industry. Their goal is to provide high level geoscience solutions, using advanced technology applications for exploration, exploitation, and development projects worldwide.

Dataminda is a partner reaching out to the Malaysian geoscience community. They have been providing services to many companies and assisting them with technology integration.

Geomodeling is delighted with its partners and looks forward to the future of business-driven successful partnerships. You can reach our partners by going to our website www.geomodeling.com and following the contact us link, or by calling your sales contact. ☎



Booth 416

SEG San Antonio
San Antonio Texas
23-28 September 2007

See us at SEG 2007
in San Antonio
and let us show you how our software
technology allows you to analyze the
evidence in your reservoir in a new way -

Be the Reservoir
Scene Investigator.

Geomodeling
RESERVOIR SCENE INVESTIGATION

Working in the Frequency Domain - Spectral Decomposition

Spectral Decomposition allows us to generate higher resolution in our seismic images. We can compare images from the frequencies to clarify geological relationships and image subtle variations produced by reservoir heterogeneity, and enhance our understanding of the reservoir.

Spectral decomposition is best applied to thinly bedded reservoirs, resolving channel, turbidite, and reef related plays by helping the geoscientist to recognize areas with similar physical characteristics that can be related to the geology.

While spectral decomposition allows us to tune into specific frequencies to reveal zones with similar physical characteristics, these zones rarely tune at just one frequency. VisualVoxAt, Geomodeling's seismic interpretation software, allows you to visualize multiple frequencies using our color cube feature.

In the following figures, we will take you through an example of spectral decomposition and the color cube.

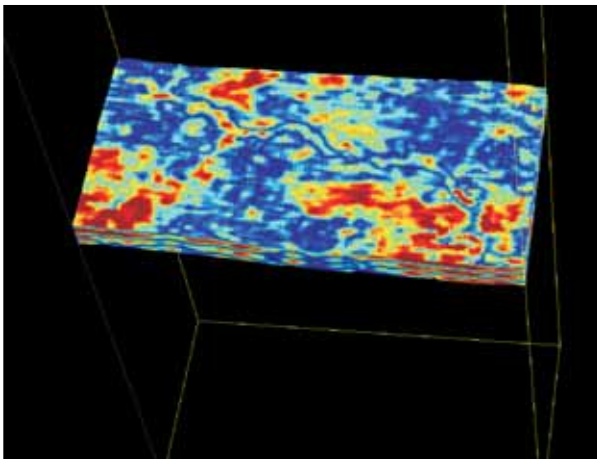


Figure 1. Spectral decomposition a 30 Hz allows you to visualize a channel feature. You can see the feature – it is not completely clear because parts of the channel are tuning at different frequencies.

**Geomodeling's
Spectral
Decomposition
greatly improves
resolution over old
DFT methods**

**Ask about our
new transforms**

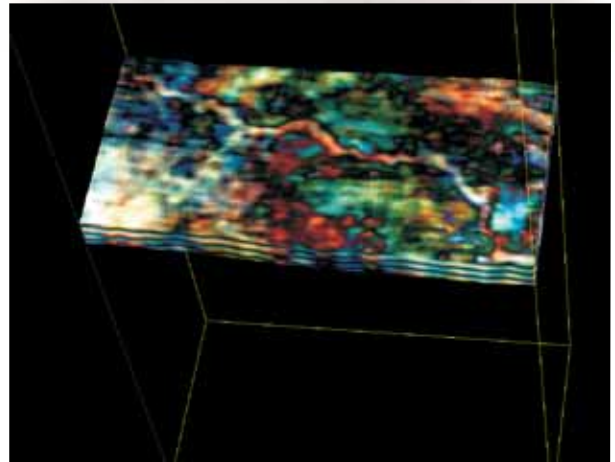


Figure 2. This is the same channel feature visualized in a color cube. The color cube allows you to visualize multiple spectral decomposition frequencies in the same volume. Note the detailed resolution of the entire channel. This color cube was computed on a strata-grid, so as you scroll up and down through the volume, you will see many more details of the main channel as well as the smaller channels associated with it.

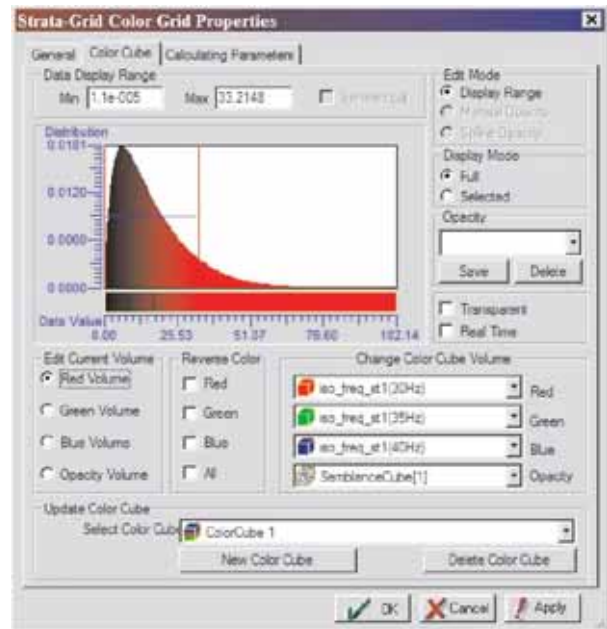


Figure 3. In this color cube above, one frequency in the red channel, one in the green, and a third in blue (red arrows) allow you to see the different frequencies at which the event tunes. Semblance in the opacity channel (blue arrow) allows you to see distinct channel edges and exactly where the best well placement will be. 🤖

Comments or questions?
Please contact us at info@geomodeling.com
– we look forward to hearing from you.

Event Highlight

Booth 416

SEG **San Antonio 2007**



San Antonio Texas
23-28 September

Geomodeling will be presenting 'RSI: Reservoir Scene Investigation' a bold theme that is a twist on the TV series 'CSI'. Play our RSI game, where you are the RSI investigator, and find the secret in the reservoir faster than anyone else.

Geomodeling will show you the new techniques and amazing results around hot topics such as: spectral decomposition, *true* multi-scale reservoir modeling, and learn what 'lithitic' and synthetic-advanced well ties are all about.

Other great things you'll see at Geomodeling's booth are all around our new Interactive Geobody Paintbrush. Pick, edit and correlate your data with more ease and flexibility than ever before. We're the only ones who have it - so check it out.

Stay tuned for our latest news during the show - and make sure you don't miss our daily speakers at our presentation theater right on our booth. See you there! **Booth #416**

Upcoming Events

September 10-14, 2007

EAGE

Petroleum Geostatistics 2007

Cascais, Portugal

Renjun Wen will be presenting a poster on 'Geological Process-Oriented Heterogeneity Modeling'

September 23-28, 2007

SEG San Antonio 2007

International Exposition and 77th Annual Meeting

Henry B. Gonzales

Convention Centre

San Antonio, Texas, USA

Booth #416

September 30 - October 3, 2007

AAPG Hedberg Research Conference

Heavy Oil and Bitumen in Foreland Basins - from Processes to Products

The Banff Centre

Banff, Alberta, Canada

Peter Phillips presents "Defining Vertical Permeability Distribution in a Steam Assisted Gravity Drainage Project: An Integrated Multi-Scale Approach to Modeling a Heavy Oil Reservoir"

October 14-18, 2007

SEG/AAPG/SPE Joint Workshop 2007

Data Fusion: Combining Geological, Geophysical and Engineering Data

Renaissance Vancouver Hotel
Harbourside

Vancouver, BC, Canada

Renjun Wen is presenting on 'Multi-Scale Heterogeneity Modeling as a Framework for Data Fusion'

October 21-23, 2007

GCAGS 2007 Annual Convention

AmericanBank Centre

Corpus Christi, Texas, USA

Booth #510

November 5, 2007

DAPL/RMAG/DGS/IPAMS 2007 Denver Prospect Fair & Technofest

Colorado Convention Centre

Denver, Colorado, USA

Booth #107

Don't miss our talk at 3 pm at the Presentation Theatre



Training Courses

It is back-to-school for you too!

Geomodeling offers training courses on: Data loading, Intro to VisualVoxAt, Seismic facies classification, Spectral decomposition, and Cross-plotting.

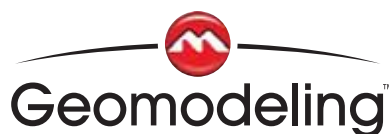
Check out our fall schedule at http://www.geomodeling.com/training_c.htm

If you are looking for a specialized topic, please drop us a note at wanda@geomodeling.com - we will be happy to assist you with your company's specific training needs.

Support

At Geomodeling, it's about our clients. We are committed to providing the highest professional standard in customer support. Our Customer Support staff offers personal and web-based support services for our clients worldwide.

To ensure that your call is handled as efficiently as possible, please contact 403-262-9172 or email support@geomodeling.com



www.geomodeling.com